

# ROLLER BLINDS DATA

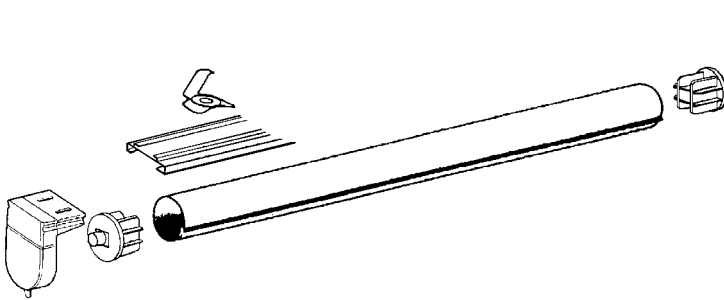
from [Intelli-Blinds](#)

JAN 2006

Our collection of textiles has a broad price range with some in wide width. This affects pricing structures so to reduce this complexity we have produced a single table AS A GUIDE

The price table is for our **SAFE-TEX2** range of plain TreviraCS (220gsm @ 2400 width & heat cut on all edges). This is an indicator of our prices that can be compared to such suppliers as Silent Gliss, G-Rail, Mottura, Luxaflex, Mechoshade etc. Each project is priced by computer and a quote submitted

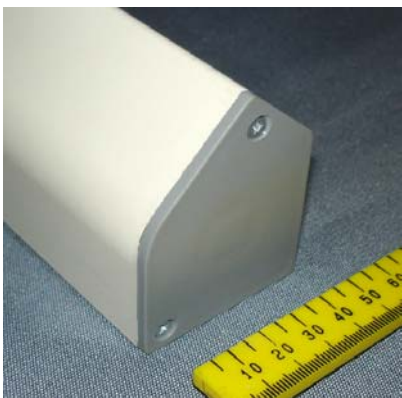
Our system uses a mounting rail secured to reveal head [ or can be turned 90° for face fix ] using turn clips that can be screwed at any point along the reveal. This eliminates the 'bracket only' systems where four holes have to be drilled into difficult reveal corners with high accuracy. Drawing shows the bead chain friction but on electric versions this is replaced by the 24v or 240v motors. The upward rollo cassette uses a cord to pull the fabric up but limited to 1400 wide. Over 1400 the Cohort has to be added with a side chain. For electric, the Cohort rail has a motor inside it. To add for various motors, cassettes, bottom rails etc see the 'Kits & Technical Bits' pricing page. This table also includes a tubular, white or silver anodised aluminium weight rail that is exposed [not a sewn pocket]. This tube can be removed to allow washing or sponging the textile. There is an optional de-mount strip, sewn to the textile, to allow removal from rollo tube for washing. White plastic chain is standard, add for nickel or raw brass.



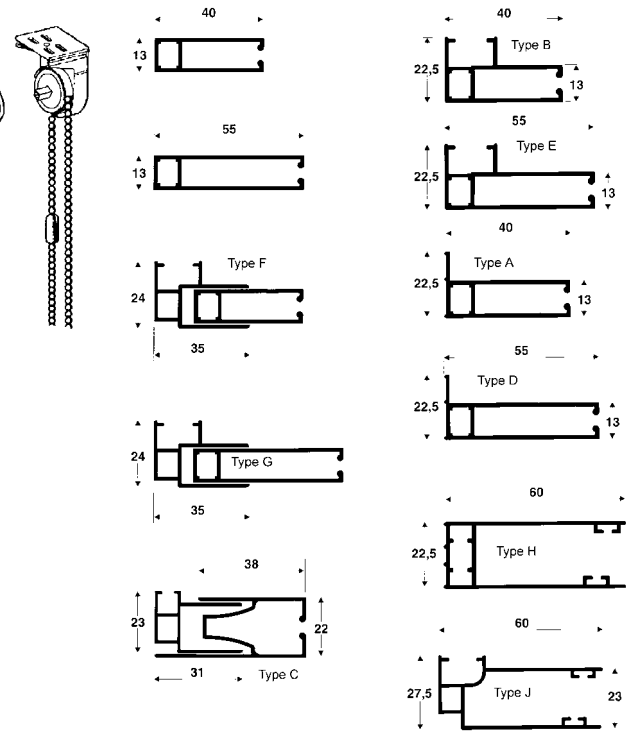
Romanetic



C77 cassette



C50 cassette



SIDE GUIDES	Part No	Type
23 x 40	9055	A-ir
23 x 40	9053	B-or
Complex adjust 2 part	9052	C adj55
23 x 55	9056	D-ir
23 x 55	9054	E-or
Adjust 35+ 40	9051 + 9049	F adj55
Adjust 35+ 55	9051 + 9050	G adj70
SIDE GUIDES woolpile	9057	H-wp-60ir
SIDE GUIDES woolpile	9058	J-wp-60or

This table is for our **SAFE-TEX2** range of plain TreviraCS (220gsm & heat cut on all edges)

Width>> drop	600	800	1000	1200	1400	1600	1800	2000	2200	2400	2600	2800	3000	ADD NICKEL METAL CHAIN
1000	86	97	107	128	140	151	162	174	212	225	246	258	271	3
1300	90	103	113	136	151	164	176	189	231	244	267	281	296	4
1600	95	107	122	147	160	175	189	204	249	262	288	304	319	5
1900	99	113	128	155	170	187	201	218	264	281	309	327	344	6
2100	102	117	132	172	176	193	210	227	275	294	323	342	361	6.50
2400	115	145	164	180	189	205	24	241	294	313	X	X	X	7
2700	132	151	172	191	210	229	250	269	311	332	X	X	X	8
3000	136	157	178	199	220	241	262	283	327	350	X	X	X	9
3300	141	163	187	208	231	252	275	298	344	369	X	X	X	10

**FANCY EXTRAS**

Scallops/Turrets/ Rails

	600	800	1000	1200	1400	1600	1800	2000	2200	2400	2600	2800	3000
BRAID ONLY Both sides	6.30	6.30	6.30	8.40	8.40	8.40	10.50	10.50	10.50	12.60	12.60	14.70	14.70
SCALLOP & BRAID Laminate backed	14	19	21	27	32	34	40	42	46	50	53	57	61
SCALLOP & BRAID Face fabric backed	19	23	25	32	36	38	44	46	53	57	59	63	76
TURRET & POLE Face fabric backed	21	29	36	42	50	57	65	71	78	86	97	105	116
Alloy RAIL brown, black	5	7	8	9	11	12	13	15	16	17	18	19	21

Alloy RAIL in white / anodised silver are standard, included in basic price tables Metal choices are: Black, Pewter, Brass, Copper, 12mm stainless (+8%) Wood choices are: pine, walnut, mahogany

Top Valance as STIFF laminated FABRIC with hookloop tape & rail	21	25	32	38	44	50	57	63	69	76	82	88	95
Alloy Top board with multi- layer curtain system	32	40	48	59	67	78	88	97	107	116	126	136	145

**Romanetic System**

**32 & 38 Friction Roller Mechanism**

**Romano System**

**40 & 50 Friction Roller Mechanism + optional C77 or C90 cassette**

Basic tube+mountrail+brkts as custom made kit	600	800	1000	1200	1400	1600	1800	2000	2200	2400	2600	2800	3000
Kit Romanetic 32 diam	30	30	30	32	34	38	42	48	52	56	60	X	x
<b>Romanetic kit 38 diam</b>	<b>x</b>	<b>x</b>	<b>36</b>	<b>38</b>	<b>40</b>	<b>44</b>	<b>48</b>	<b>54</b>	<b>58</b>	<b>62</b>	<b>66</b>	<b>72</b>	<b>80</b>
Kit Romano 43	x	x	36	38	40	44	48	54	58	62	66	72	80
Kit Romano 50	x	x	40	42	44	48	52	58	64	68	74	78	86

**TECHNICAL EXTRAS**

Motors, De-accelerators, Cassettes, Cohort puller      Fabric THICKNESS LIMITS apply to Upward, C50 & Kurvy cassettes  
For pricing side guides read the width grid as the blind's drop grid

Side guide typeA (pair)	17.20	15.40	19.20	23.00	27.00	30.80	34.60	38.40	42.20	46.00	50.00	53.80	57.60
Side guide typeB (pair)	13.40	18.00	24.00	26.80	31.40	35.80	40.40	44.80	49.20	53.80	58.20	62.80	67.20
Side guide typeC (pair)	24.00	32.00	40.00	48.00	56.00	64.00	72.00	80.00	88.00	96.00	104.00	12.00	120.00
C50 cassette	20	24	28	32	38	42	48	52	58	62	NR	NR	NR
C77 cassette	x	x	50	50	50	54	60	66	72	78	84	90	98
C90 cassette	X	X	X	X	X	X	90	96	102	106	110	114	118
Kurvy cassette [electric not possible]	10	12	14	18	20	22	26	NR	NR	NR	NR	NR	NR
24v dc motor	190	190	190	190	190	190	190	190	190	210	210	210	210
240v ac motor	xxx	346	346	346	346	346	346	346	346	346	398	398	398
Pulleys & clamcleat for Upward cassette	12	12	12	12	12	20	20	20	Use Cohort with chain				
Side chain CohortT5 for Upward cassette	56	58	62	64	66	68	80	82	84	88	Power supplies, switches & controls not included		
Cohort24 puller for Upward cassette	X	192	196	202	230	234	246	250	254	260			